

## LC-MS TRAINING COURSES

Mass Spectrometry and Liquid Chromatography are common techniques in today's analytical lab. Technological advances have greatly increased the applicability and efficiency of these analytical tools. At the same time, the actual hardware is developing into black boxes. A good understanding of what happens inside is more important than ever, but also more difficult to gain.

MS Vision can offer a solution for you!

By offering targeted, **hands-on** training courses, aimed at the expertise level of the equipment users, MS Vision can help improve efficiency and boost job satisfaction of your employees. Working **on-site on your equipment** and focusing **on your application**, our trainers will explain how to get the most out of your instrumentation.

Working with hundreds of customers over the past decade, MS Vision has a wealth of experience in both technology and application of LC and MS equipment. Our trainers have many years of experience in supporting LC and MS systems; dealing with hardware, software and analytical challenges.



**On-Site** no travel, training on your equipment  
**Flexible** tailored to your situation, customized training  
**Cost-effective** relevant training, improved efficiency

Choose one of our courses:

- Getting started with LC/MS
- LC instrument maintenance
- MS instrument maintenance
- Advanced MS operator

Or contact us for customized training courses, covering your subject of choice and at the expertise level you require: novice, experienced or expert.

Start increasing sample throughput, data quality, and job satisfaction today!

Send an email to [info@msvision.com](mailto:info@msvision.com)

or send your request through [www.msvision.com/services/training](http://www.msvision.com/services/training)

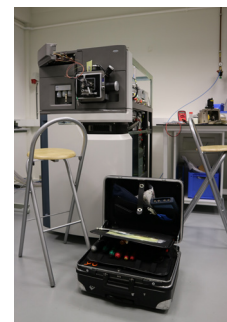
## Getting started with LC/MS Training course

This course is aimed at beginners in the LC-MS field, and covers:

- LC theory
- MS theory
- LC/MS coupling
- Optimization
- Integration with other detectors
- Basic troubleshooting

Duration of the course: 2 days

Group size: for up to 3 people



## LC instrument maintenance Training course

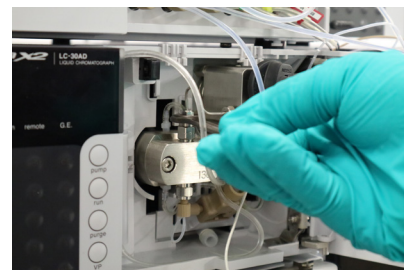
This course is intended for experienced LC users that would like to improve system uptime and performance. During the course participants will learn how to maintain their LC equipment according to manufacturers' standards.

Main topics:

- Pump, injector and detector maintenance
- Performance testing, recognizing problems

Duration of the course: 1,5 days

Group size: for up to 5 people



## MS instrument maintenance Training course

Learn how to perform maintenance on your MS system and keep it in top shape. This course is for experienced operators that want to have a better understanding of their instrument:

- Instrument build
- Key performance criteria
- Recognizing problems
- Standard tests
- Instrument tuning and calibration
- Cleaning

Duration of the course: 1,5 days

Group size: for up to 3 persons

## Advanced MS operator Training course

For the more demanding applications and analytical setups, we offer training to bring more experienced users to expert level.

- Instrument theory
- Sensitivity optimization
- Resolution optimization
- MS method considerations
- Data acquisition
- Post-processing
- Common problems
- Troubleshooting

Duration of the course: 2 days

Group size: for up to 3 persons